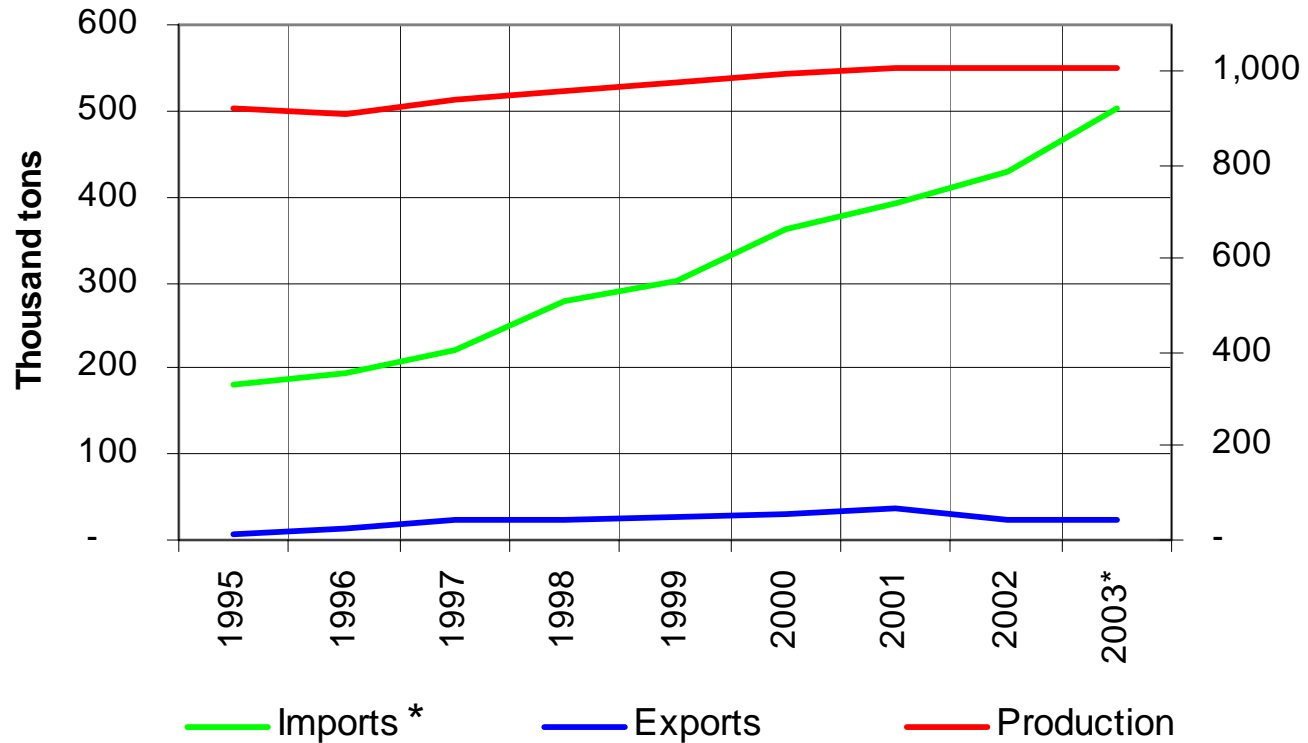


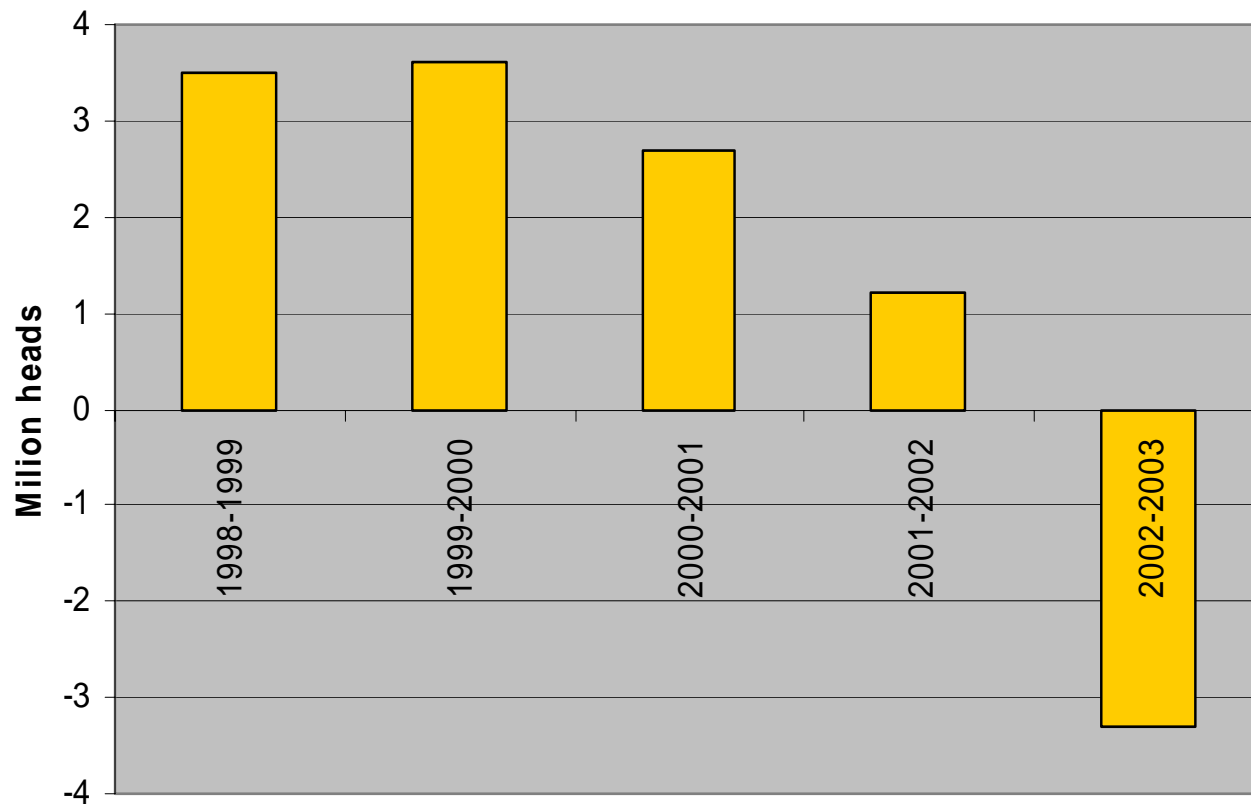
Mexican Pork Market



Source: Cordinación General de Ganadería - SAGARPA

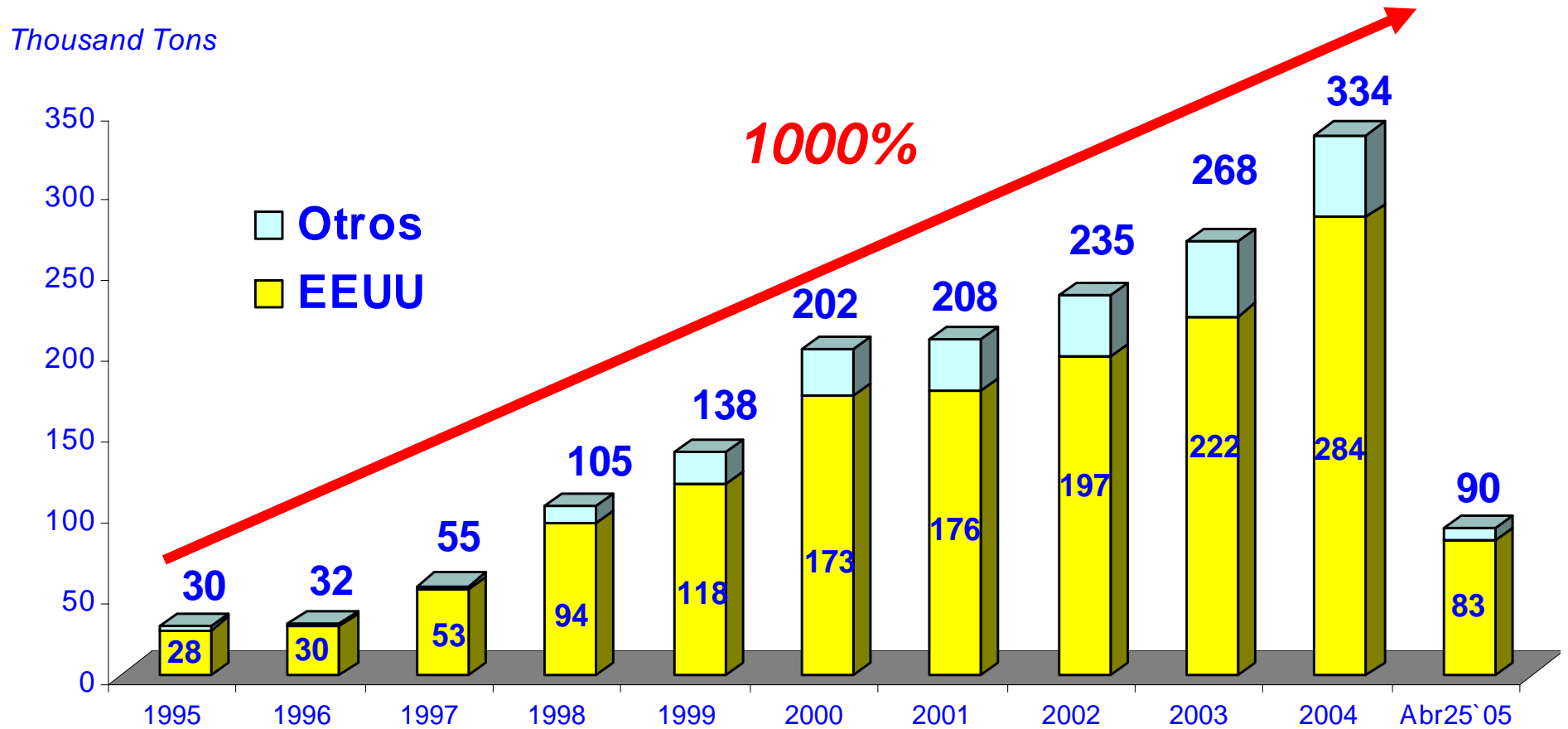
* Includes live hog, smoked products, skins and offals.

Annual Pork Growth Production in Mexico (%)



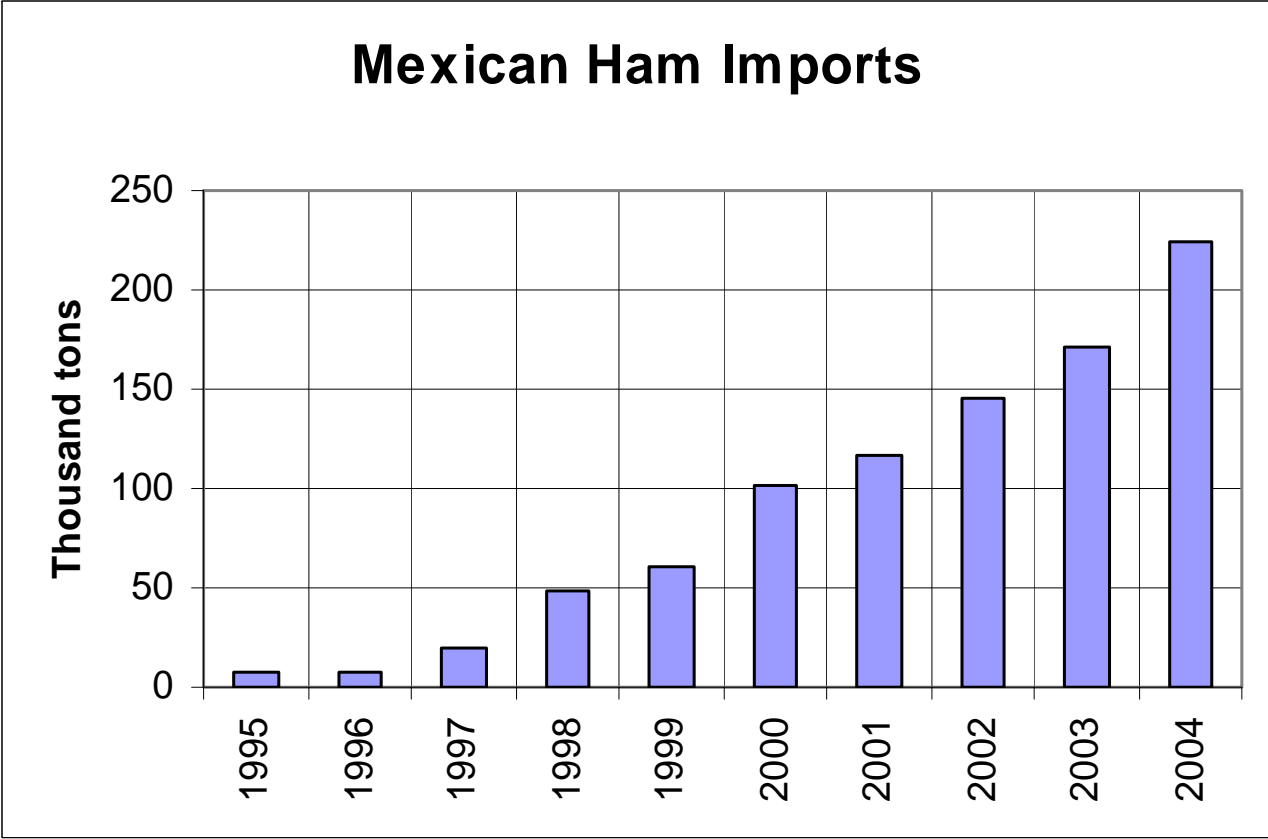
Source: CONFEPORC

TOTAL PORK IMPORTS



Incluye las fracciones 02031101, 02031201, 02031999, 02032101, 02032201, 02032999.

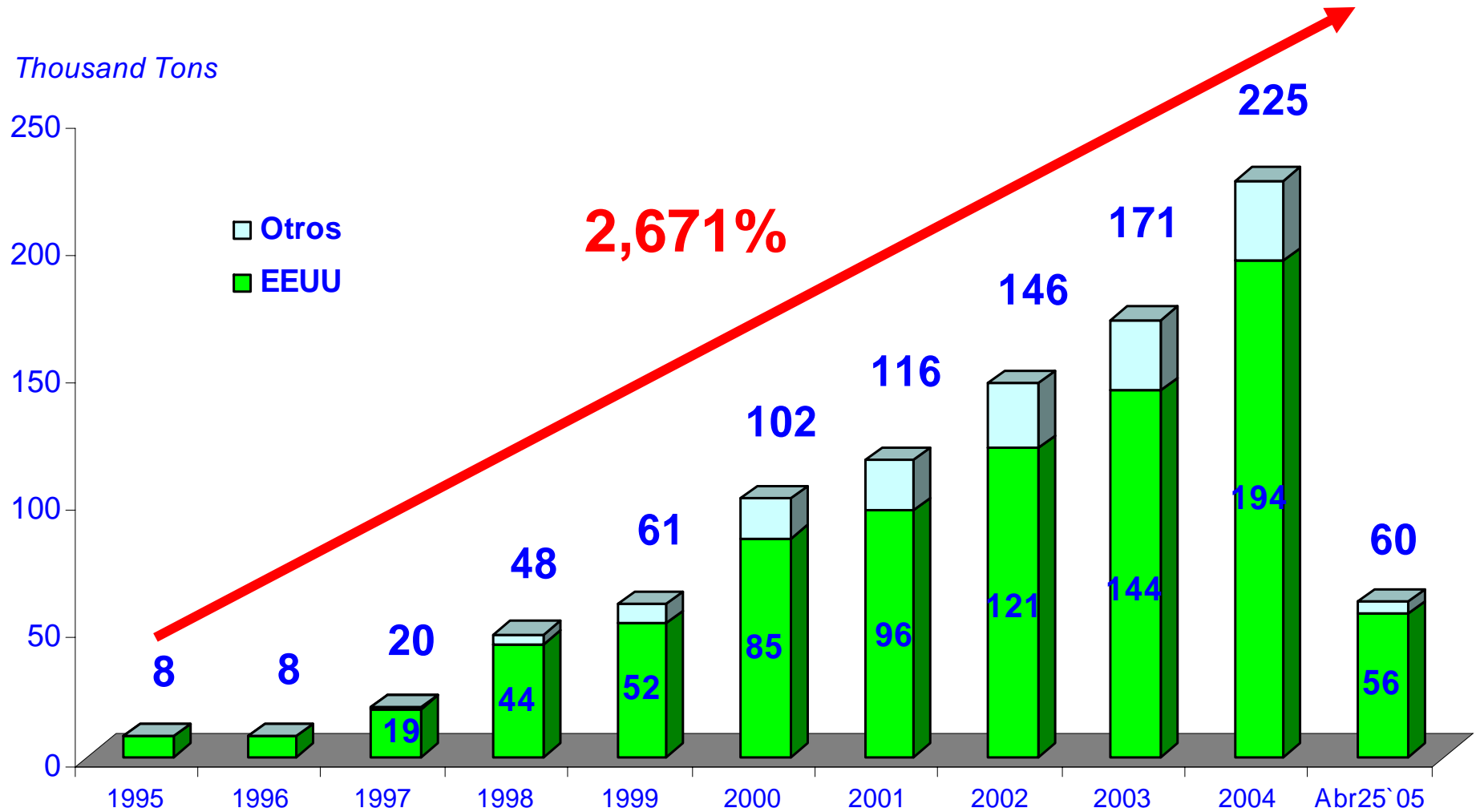
Fuente: CONFEPORC con datos de la SHCP. Se considera las importaciones definitivas y temporales (documentos A1, C1 y A2); Excluye animales vivos, desp. y prep. Datos de Abril con información del SIAP.



Source: CONFEPORC with information of SHCP

HAM IMPORTS

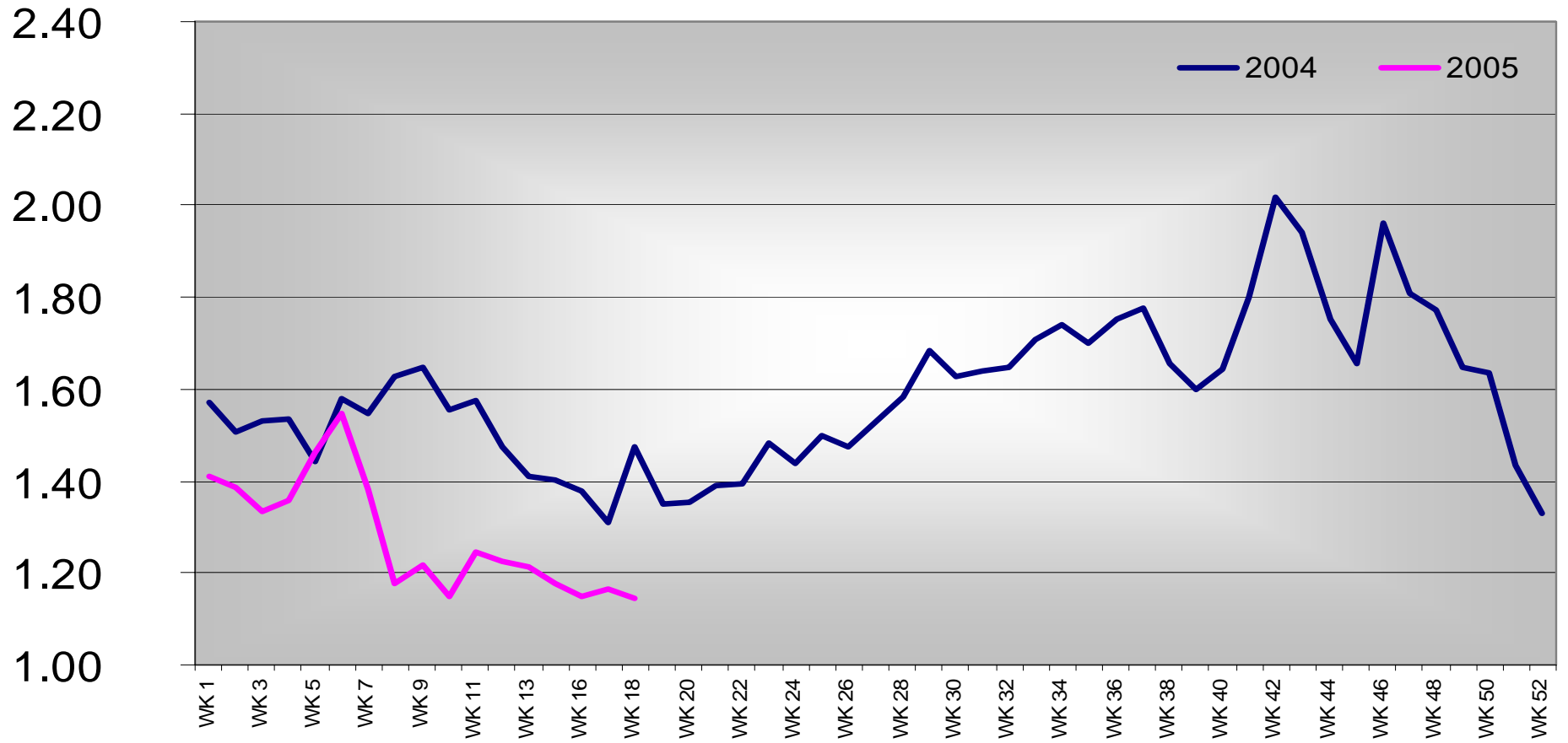
Thousand Tons

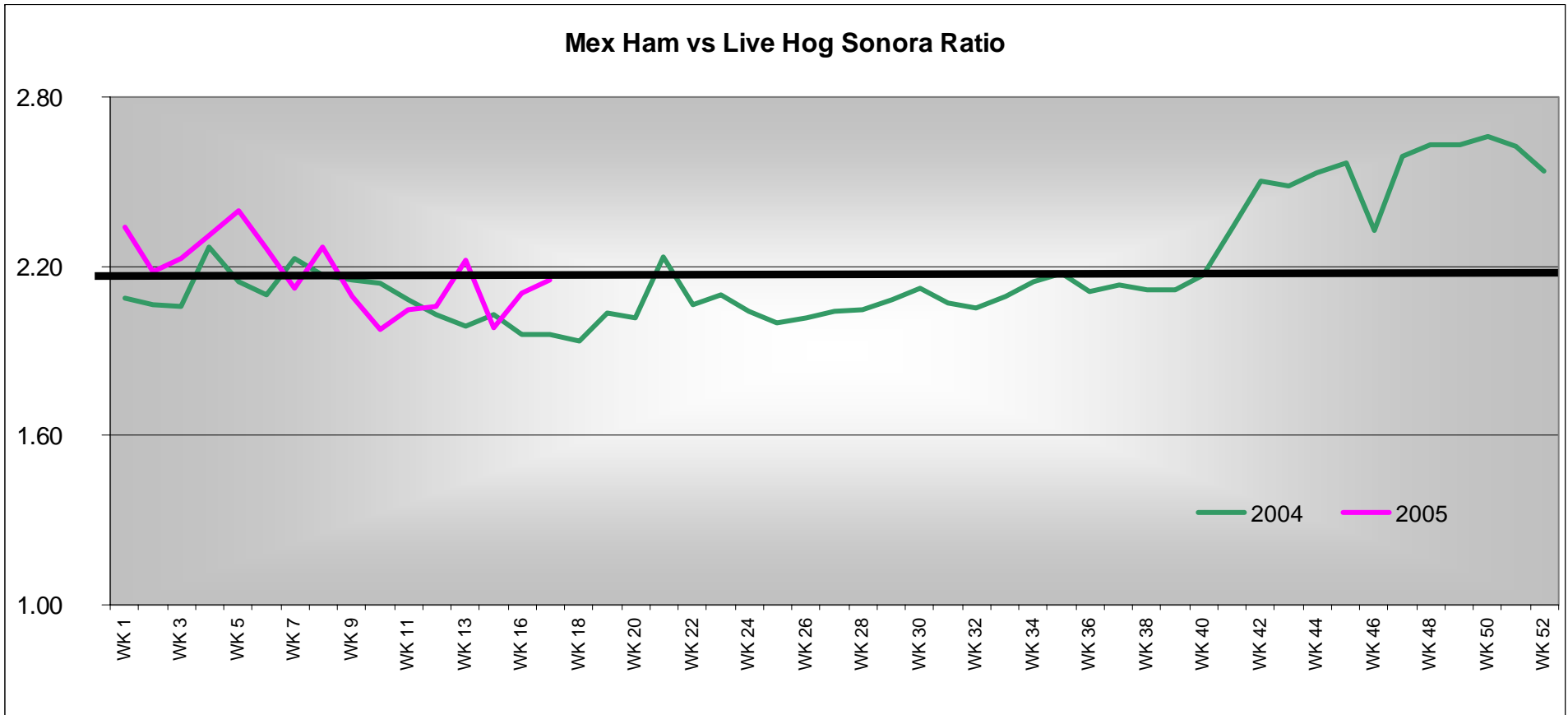


Incluye las fracciones 02031201, 02032201

Fuente: CONFEPORC con datos de la SHCP. Se considera las importaciones definitivas y temporales (documentos A1, C1 y A2). Datos de Abril con información del SIAP

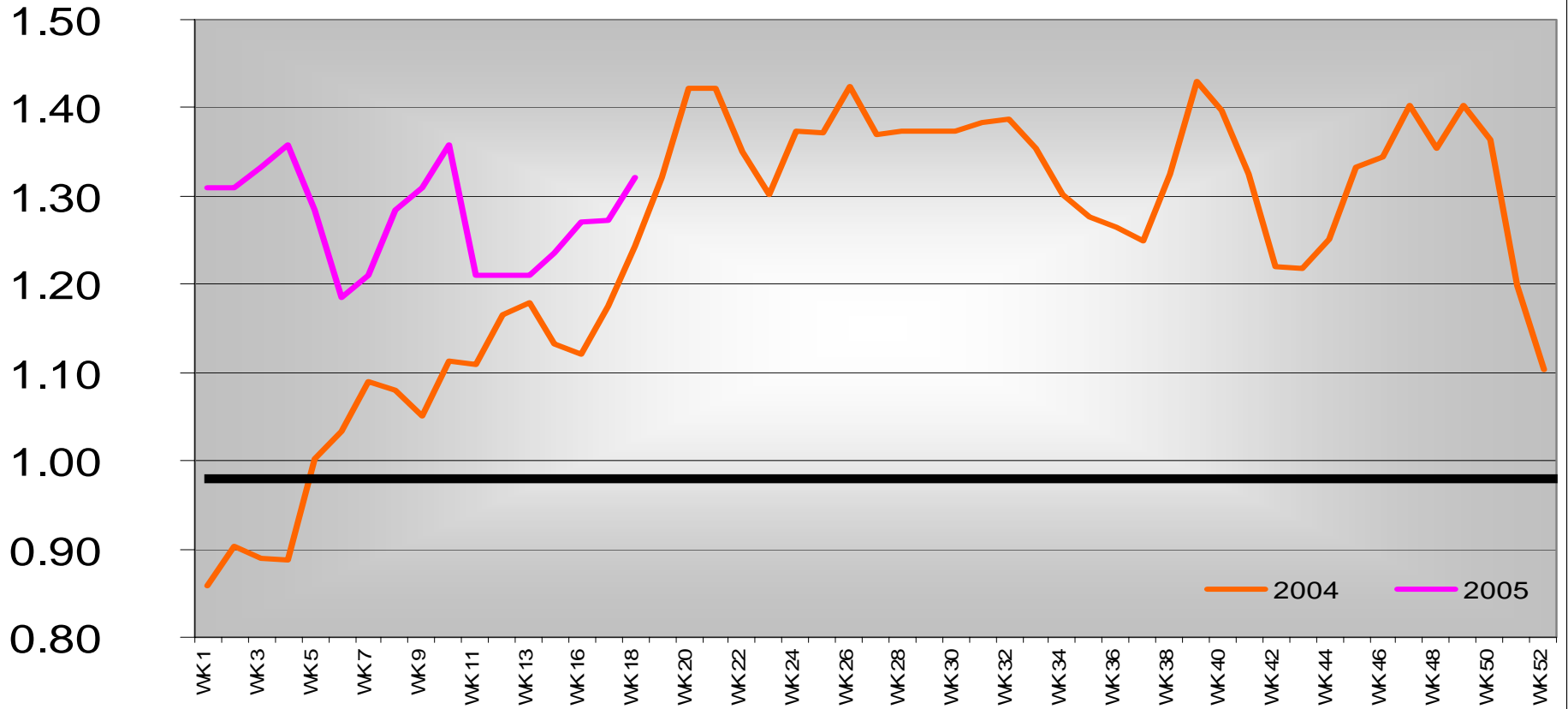
USA HAM vs USA LIVE HOG (RATIO)

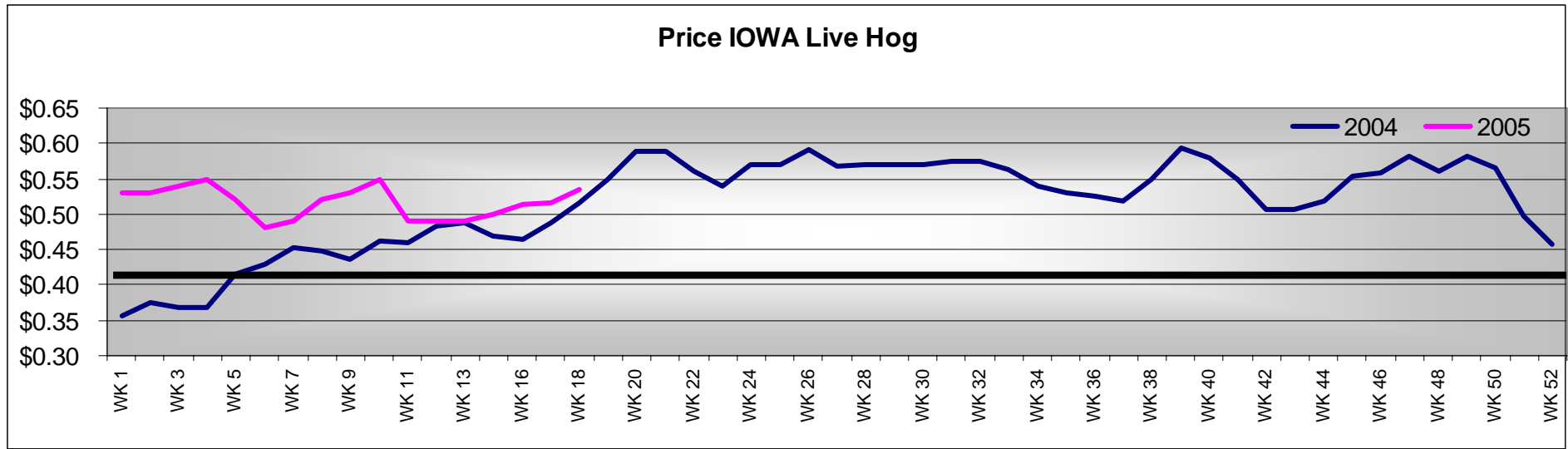
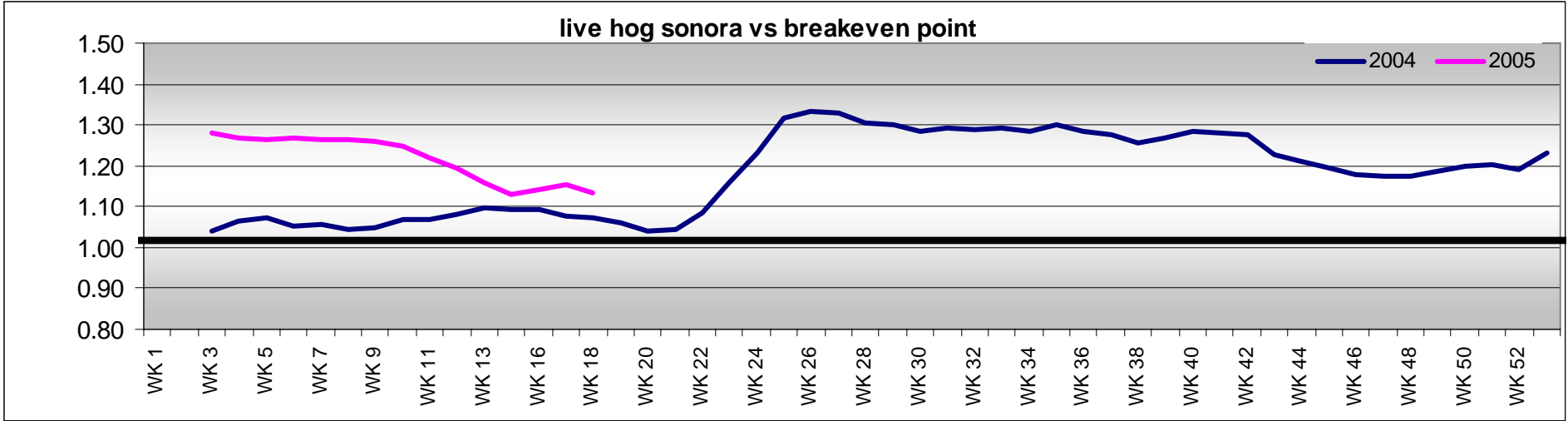




Good Ratio in US Hams in the last part of the year
 Equal Good Ratios in Mexican Hams

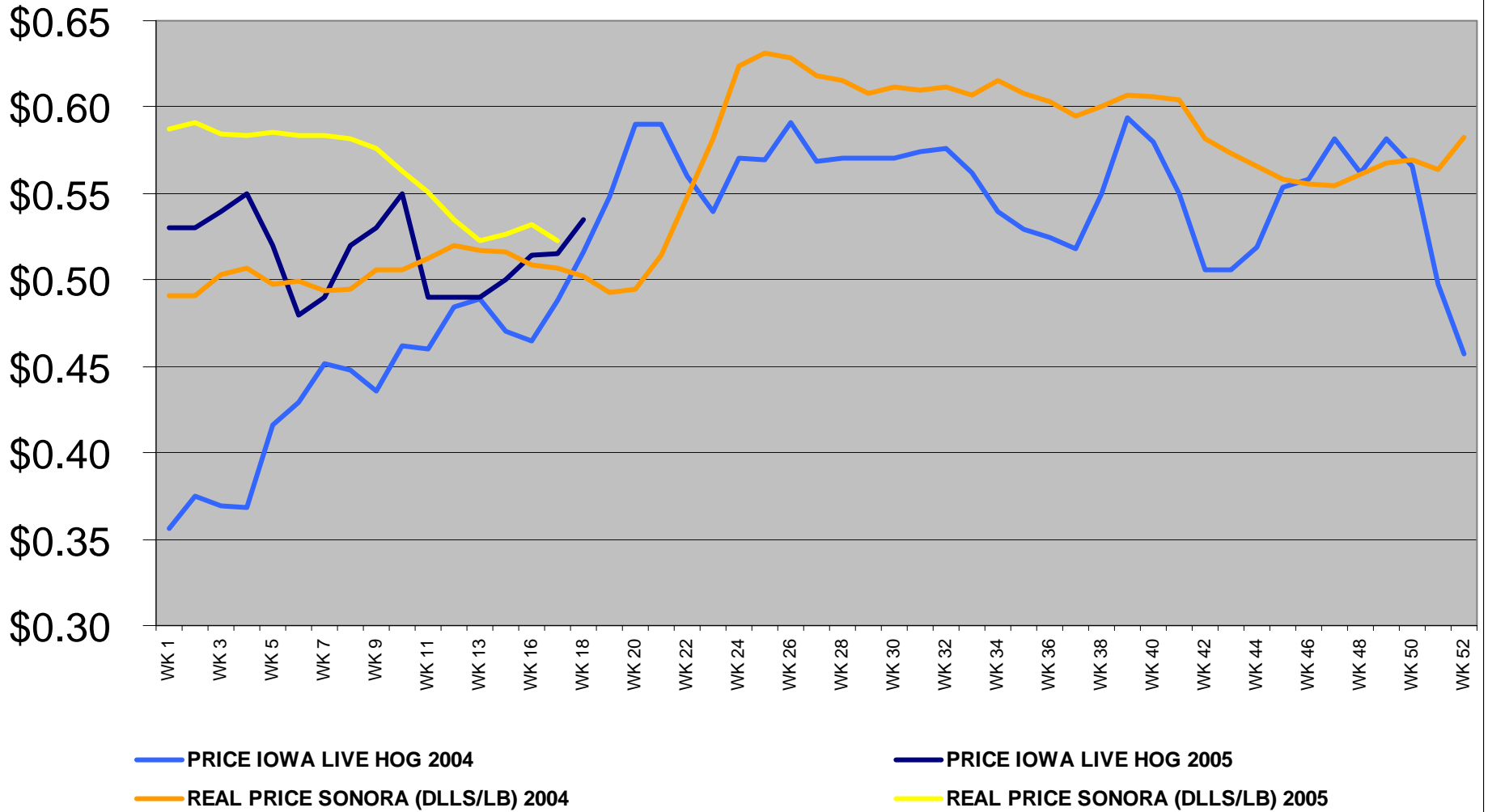
Live Hog USA vs breakeven (RATIO)

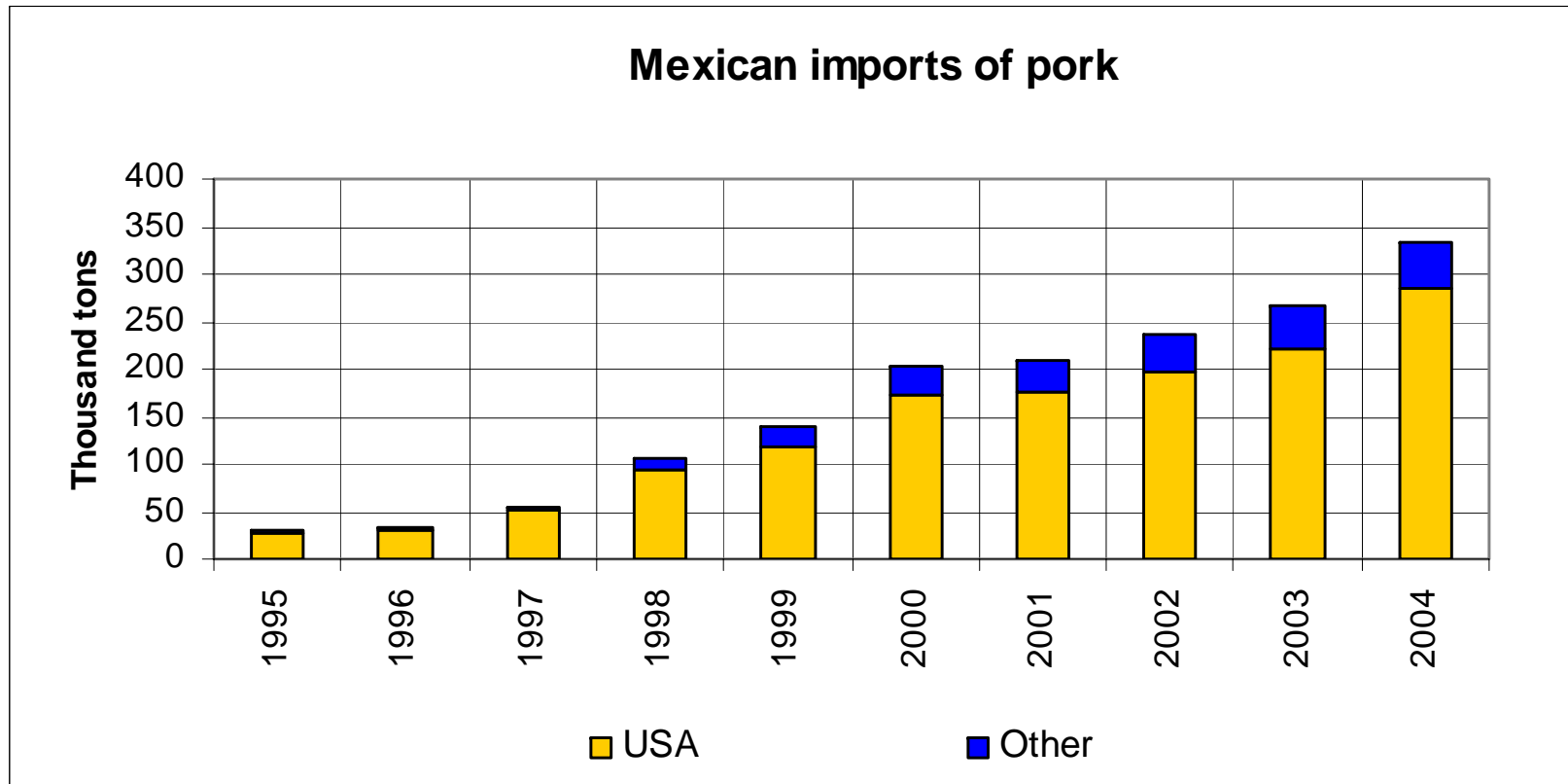




High Prices in USA equal High Prices in Mexico

Price IOWA Live Hog vs Real Price Sonora (dlls/lb)





Source: CONFEPORC with information of SHCP